

INSIGHTS - Q3

Quarter 3 - 2018

40TH ANNIVERSARY

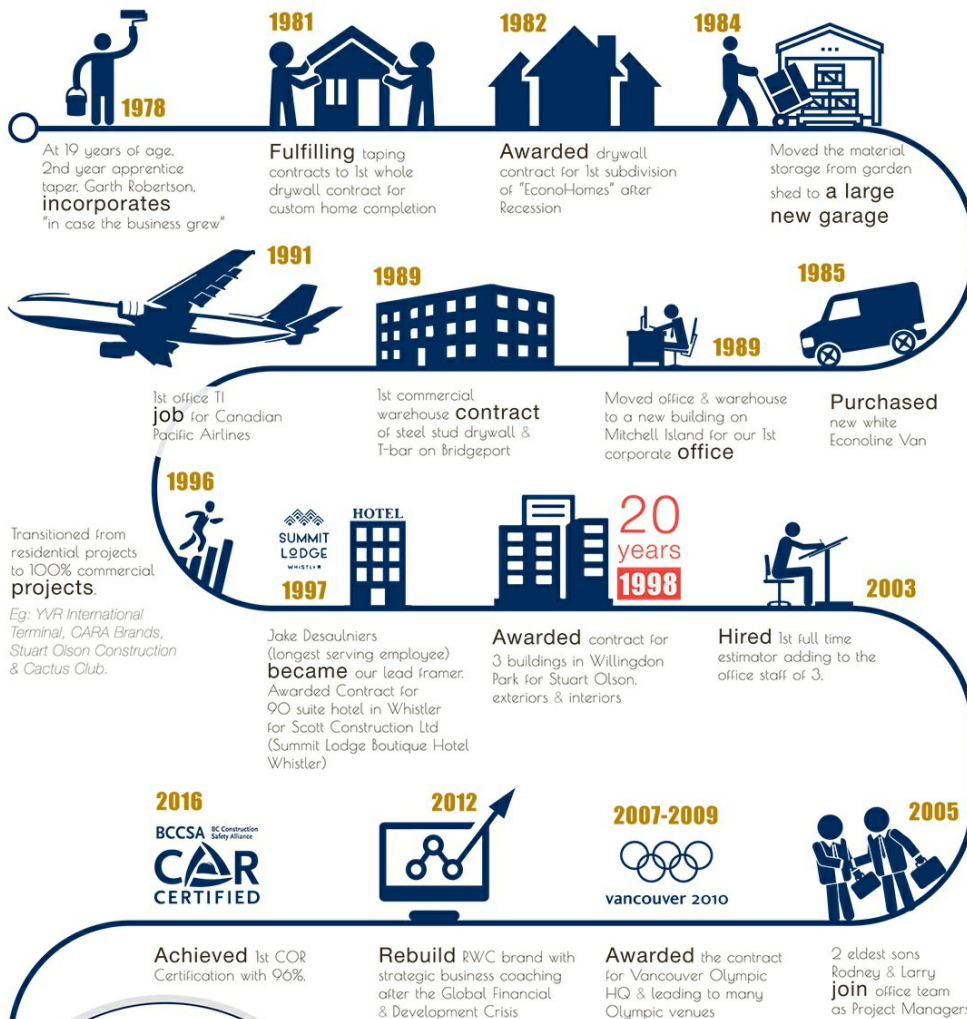
On August 3rd, RWC held a company BBQ to celebrate the 40th anniversary, led by Garth Robertson. It was a great family occasion where stories and milestones from our journey were shared.

We would like to take this opportunity to extend our thanks to all of our valued staff and customers who have been a part of this successful journey!

The RWC Company Story

WE ARE CELEBRATING 40 YEARS OF SUCCESS!

Robertson Walls & Ceilings, since 1978



www.rwcsystems.net

40^{years}
ROBERTSON
 WALLS & CEILINGS
"building the highest standards"

2018

900+ projects completed
180+ team members
90% repeat business

Projects completed include:
 Car dealerships, skytrain Infrastructure, schools, hotels, office buildings, retail stores, shopping centres

The RWC Vision & Values



OUR VISION

To be the most distinctive commercial wall & ceiling company in Metro Vancouver

OUR VALUES

Relationships: We develop strong relationships with our employees and families, our community and our clients. These relationships create customers for life.

Honesty & Integrity: For more than 40 years, our trusted relationships have been built on honesty and integrity. We say what we mean, and do what we say.

WHAT MAKES US UNIQUE

We solve our customer's problems by listening to their challenges, and delivering high quality, innovative solutions that work.

OUR GOALS

1. Deepen our profile and presence in the drywall market.
2. Grow our relationships throughout the construction industry.
3. Respond to the needs of our customers beyond Metro Vancouver.
4. Expand the capacity of our team by leveraging the strength of our people and culture.
5. Creating a culture of safety where everyone gets to go home to their families.

JUST COMPLETED: 565 GREAT NORTHERN WAY!



We recently completed the another successful project in partnership with Ledcor. A landmark, low rise commercial tower. Site Foreman was Jamie Gontar and was onsite for 10 months. We performed the base building works at the 3 parking levels and all 7 floors plus the roof top penthouse area. Our scope involved interior and exterior framing drywall and t-bar, exterior soffits, fire rated shaft walls, entrance and elevator lobbies. Close coordination with the Ledcor site team ensured success on this project. The end result is a beautiful building and was an exciting build.



RECENTLY AWARDED PROJECTS

- Central City Brewery Phase 2, Ventana Construction
- PHSA Tenant Improvement, Turner Construction
- LEC, Smith Bros & Wilson
- UBC Buchanan, Kinetic Construction
- RJC Tenant Improvement, Turner Construction

PROJECT IN PROGRESS SPOTLIGHT

THE MOLSON CHILLIWACK PROJECT





Our Estimating Team taking a tour of this incredible project



This picture shows the north elevation of the Molson project

General Contractor: **Smith Bros & Wilson**

Size: **400,000 sq ft**

Time-frame for drywall scope: **11 months**

Molson is a very unique, large scale commercial project. We are performing exterior and interior framing, insulation and drywall. This job mainly consists of walls in excess of 30' high with some going as high as 50'!

Rob Nelson is the site foreman and our overall approximate project duration will be about 11 months. Scheduling and sequencing issues are the main challenge on this project. This project is a complex, multi faceted build with logistical challenges. At 400,000 square feet, the sheer scale of the brewery is awesome and you feel so small walking among the absolutely massive brewing tanks.



What our clients are saying about us

"RWC actively participated in planning, scheduling and implementation of the innovative Loop Truss assembling on the ground including prefabrication of the steel stud infill framing and roof parapets - this program allowed the team to eliminate majority of the high-risk night work above the guideway and to complete the project on time."

-Vladimir Krotkiy, Sr. Project Manager / GRAHAM-Metrotown Skytrain Station Project

[Request A Budget For Your Next Project](#)

MEET OUR DISTINCTIVE PERSONNEL FEATURE

Brenda Cliffe - HR Manager

What would you like to share about working at Robertson Walls & Ceilings?

Great things about working at RWC: People, culture, benefits, safety awareness, team collaboration, and work-life balance.

What do you find most exciting about the field? Most challenging?

Most exciting about the drywall industry is that there is always work and every day there is something new. You get to work with a team and see immediate results from the teams' work.

Most challenging is the skilled labour shortage. The construction industry used to consist of two generations: traditionalists and baby boomers. Now we have four generations: traditionalists, baby boomers, Gen X and millennials. By 2020, millennials are expected to represent half the global workforce, many with little to no experience or interest in the construction industry.



Desiree Helder - Project Coordinator

We are pleased to announce that Desiree Helder is Robertson Walls and Ceilings' newest Project Coordinator.

Desiree comes to us with more than three years of experience in the field. We are all confident that Desiree will take on her new responsibilities with the same

enthusiasm and professionalism she has shown so far.



FOLLOW US ON SOCIAL MEDIA FOR PROJECT
UPDATES



Visit our website

